

# Lead1Pass

LEAD1PASS

> Contact Us

Login / Register

Search...



HOME

ALL VENDORS

★ GUARANTEE

? FAQ

TESTIMONIALS

CART (0)



Try **PDF Demo** before you buy



## Instant Download



After Payment, our system will send you the products you purchase in mailbox in a minute after payment. If not received within 2 hours, please contact us.

## 365 Days Free Updates



Free update is available within 365 days after your purchase. After 365 days, you will get 50% discounts for updating.



## Money Back Guarantee

Full refund if you fail the corresponding exam in 60 days after purchasing. And Free get any another product.



## Security & Privacy

We respect customer privacy. We use McAfee's security service to provide you with utmost security for your personal information & peace of mind.

<http://www.lead1pass.com/>

Latest Exam Guide & Learning Materials

**Exam** : **IC3\_GS4\_CF**

**Title** : Certiport IC3 Computing  
Fundamentals

**Vendor** : Certiport

**Version** : DEMO

**NO.1** All of the following file names are excluded by Windows except for which one?

- A. \*File1
- B. |File1
- C. /File1
- D. File\_1

**Answer:** D

**NO.2** Which of the following animation technologies is used in the CoffeCup Firestarter animation software?

- A. Flash
- B. CGI
- C. Shockwave
- D. GIF

**Answer:** A

**NO.3** Which of the following commands in the Print Preview window allows you to resize the print area and edit the worksheet?

- A. Setup
- B. Page Break Preview
- C. Margins
- D. Zoom

**Answer:** B

**NO.4** In which of the following software licenses, the software publisher grants a license to use one or more copies of software, but the ownership of those copies remains with the software publisher?

- A. Shareware License
- B. Free License
- C. Proprietary License
- D. Open Source License

**Answer:** C

**NO.5** Which of the following software will be stored on non-volatile memory such as integrated circuits, and then it will be termed as firmware?

- A. Application Software
- B. Simulation Software
- C. Utility Software
- D. System Software

**Answer:** D

**NO.6** Which of the following statements are true about the disadvantages of the flat panel monitors? Each correct answer represents a complete solution. Choose all that apply.

- A. Moderate but high flicker depending on backlight technology
- B. Very slack and high power consumption

- C. Lowering perceptual quality or display at 1:1 pixel mapping in which images will be physically too large or would not fill the whole screen
- D. Slow response times, which cause smearing and ghosting artifacts
- E. Input lag and dead pixels may occur either during manufacturing or through use
- F. Only one native resolution and displaying resolutions either requires a video scaler
- G. Bleeding and uneven backlighting in some monitors, causing brightness distortion, especially toward the edges
- H. Limited viewing angle, causing color, saturation, contrast and brightness to vary, even within the intended viewing angle by variations in posture

**Answer:** C,D,E,F,H

H

**NO.7** You work as an Office Assistant for BlueSoft Inc. You use Microsoft Word for creating documents. You need to compare two versions of a document. Which of the following actions will you perform to accomplish the task? Each correct answer represents a part of the solution. Choose all that apply.

- A. Click the Compare button, and then select Compare.
- B. Click the References tab.
- C. Click the View tab.
- D. Click the Review tab.

**Answer:** A,D

**NO.8** You work as an Office Assistant for Tech Perfect Inc. You are creating a report in a workbook in Excel

2007. You enter test data in a worksheet in the report. The fragment of the sheet is shown below:

	D	E	F
1			
2		Data	
3		20	
4		14	
5		12	
6			
7			

You are testing logical conditions to use them in your report later. Which of the following conditional formulas will return "True"?

- A. =NOT(E3+E4=34)
- B. =OR(E3>E4, E3<E5)
- C. =AND(E3<E4, E3>E5)
- D. =AND(E3>E4, E3<E5)

**Answer:** B

**NO.9** You work as an Office Assistant for BlueSoft Inc. You use Microsoft Word 2007 for creating documents. You need to insert comment in a document. Mark the tab that contains the option for inserting comment.

**Answer:**



**NO.10** Which of the following interface types are used to connect a mouse to a personal computer? Each correct answer represents a complete solution. Choose all that apply.

- A. PS/2
- B. USB
- C. PC 99
- D. Parallel port
- E. IrDA

**Answer:** A,B,E

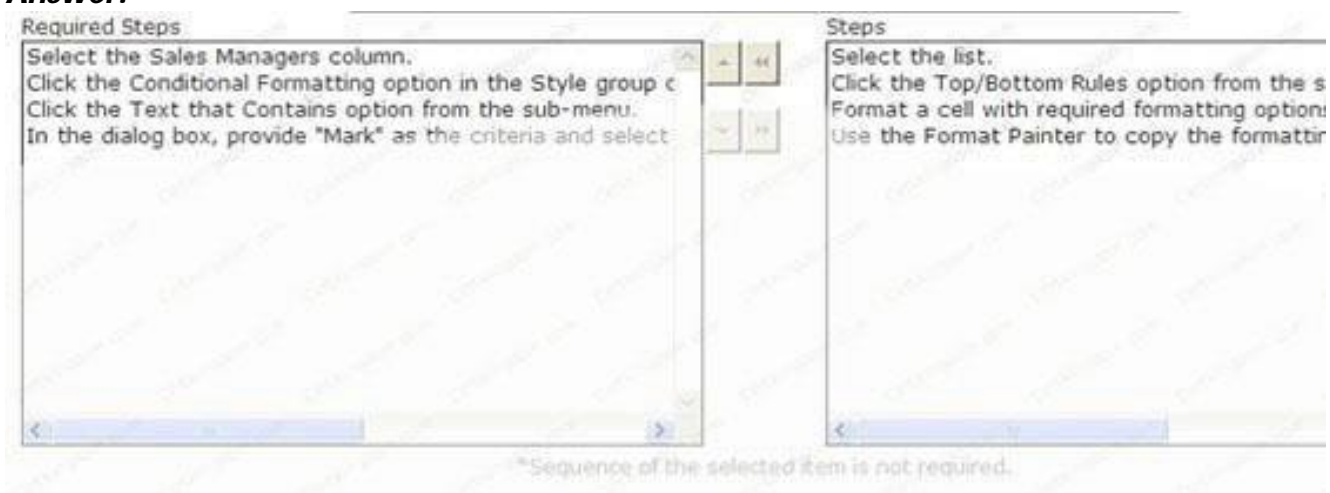
**NO.11** You work as an Office Assistant for Tech Perfect Inc. Your responsibility includes preparing sales reports of the company. You create a report in a workbook in Excel 2007. A worksheet in the report contains a list. The fragment of the sheet is shown below:

	A	B	C	D
8				
9	Zones	Months	Sales Managers	Sale
10	East	Jan	Mark	200
11	East	Jan	Martha	239
12	East	Jan	Sandra	500
13	East	Feb	Mark	111
14	East	Feb	Martha	553
15	East	Feb	Sandra	342
16	East	Mar	Mark	565
17	East	Mar	Martha	674
18	East	Mar	Sandra	456
19	West	Jan	Peter	459
20	West	Jan	Kit	110
21	West	Feb	David	634
22	West	Feb	Peter	342

The list contains the sales data of all sales managers of the company. You want to format all the cells that contain the value "Mark" in the Sales Manager column, so that they appear differently. You have to do it with the least administrative burden. Choose the required steps that you will take to accomplish the task.



**Answer:**



**NO.12** Which of the following measures is used by the surge suppressor to specify the amount of energy it absorbs?

- A. joules
- B. amp
- C. watt
- D. volt

**Answer:** A

**NO.13** Which of the following is an input device that is used for controlling machines such as cranes, trucks, underwater unmanned vehicles, wheelchairs, surveillance cameras, and zero turning radius lawn mowers?

- A. Joystick
- B. Microphone
- C. PS/2
- D. AGP

**Answer:** A

**NO.14** Which of the following is used by a Mac OS to access the major system settings that affect the performance and characteristics of a user?

- A. Event Viewer
- B. Task Manager
- C. Control Panel
- D. System Preferences

**Answer:** D

**NO.15** Which of the following objects will a user use to provide a name for a field in a form?

- A. Radio Button
- B. Label
- C. Checkbox
- D. Textbox

**Answer:** B

**NO.16** Which of the following is a circuitry that carries various signals, addresses, and data among the components of the computer?

- A. RAM
- B. ROM
- C. CPU
- D. Bus

**Answer:** D